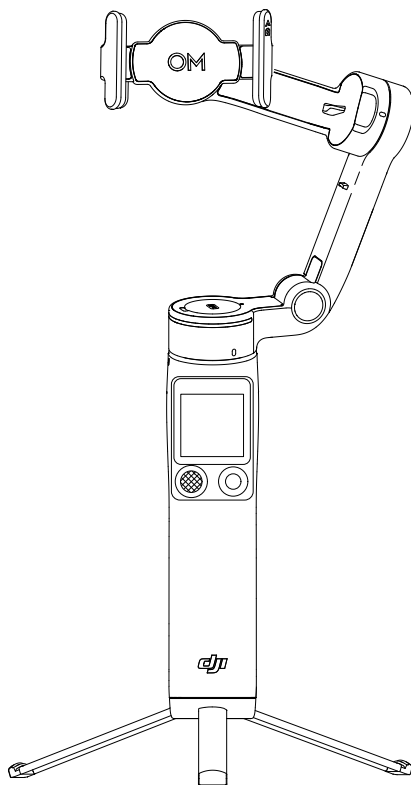


dji OSMO MOBILE 8P

User Manual

v1.0 2026.04





This document is copyrighted by DJI with all rights reserved. Unless otherwise authorized by DJI, you are not eligible to use or allow others to use the document or any part of the document by reproducing, transferring or selling the document. Only refer to this document and the content thereof as instructions to operate DJI products. The document should not be used for other purposes.

In the event of divergence among different versions, the English version shall prevail.

Searching for Keywords

Search for keywords such as “battery” and “install” to find a topic. If you are using Adobe Acrobat Reader to read this document, press Ctrl+F on Windows or Command+F on Mac to begin a search.

Navigating to a Topic

View a complete list of topics in the table of contents. Click on a topic to navigate to that section.

Printing this Document

This document supports high resolution printing.

Using this Manual

Legend

△ Important

💡 Hints and Tips

📖 Reference

Read Before Use

DJI™ provides you with tutorial videos and the following documents:

1. *Safety Guidelines*
2. *Quick Start Guide*
3. *User Manual*

It is recommended to watch all the tutorial videos and read the *Safety Guidelines* before using for the first time. Make sure to review the *Quick Start Guide* before using for the first time and refer to this *User Manual* for more information.

Video Tutorials

Go to the address below or scan the QR code to watch the tutorial videos, which demonstrate how to use the product safely:



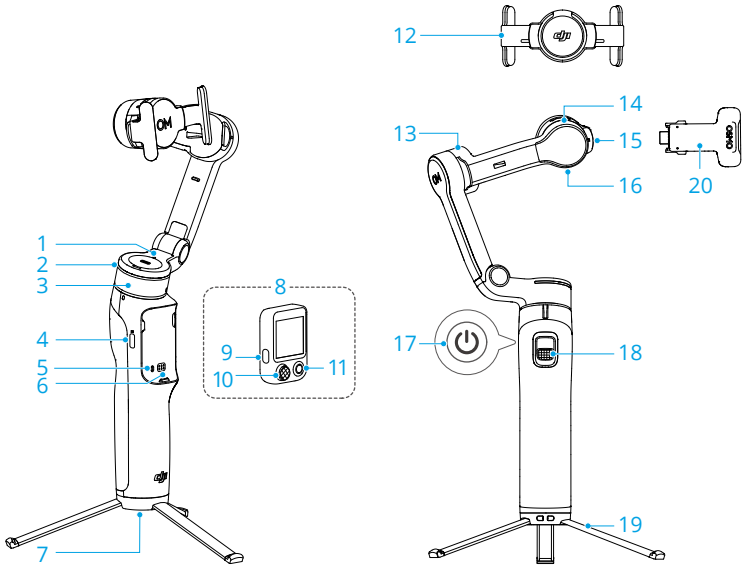
<https://www.dji.com/osmo-mobile-8p/video>

Contents

Using this Manual	3
Legend	3
Read Before Use	3
Video Tutorials	3
1 Product Profile	6
2 Using for the First Time	7
2.1 Unfolding	7
2.2 Attaching the Phone	8
2.3 Connecting to the DJI Mimo App	9
2.4 Firmware Update	10
2.5 Usage	11
Remote Capture	11
Handheld Capture	11
2.6 Charging	13
3 Basic Features	14
3.1 Buttons and Ports	14
3.2 Remote Controller Touchscreen	16
Home	16
Swipe Down - Control Center	17
Swipe Up - Gimbal Settings	18
Swipe Right - Multifunctional Module	18
Swipe Left - Phone Screen Mirroring	18
3.3 Follow Modes	20
3.4 Automatic Camera Movements	21
3.5 Indicators	22
3.6 Phone Charging	24
3.7 Storage	25
4 Advanced Features	26
4.1 Multifunctional Module (Optional)	26
Installing	26
Tracking and Shooting	27
Control via Touchscreen	28
Control via Buttons	28
Control via Gesture	29
ActiveTrack Settings	31
Fill Light	32

	Phone Charging	32
4.2	Connecting to Wireless Microphones	33
4.3	Apple DockKit Tracking	33
4.4	Remote Control With Watch	35
5	Maintenance	36
6	Appendix	37
6.1	Specifications	37
6.2	Phone Compatibility	37

1 Product Profile

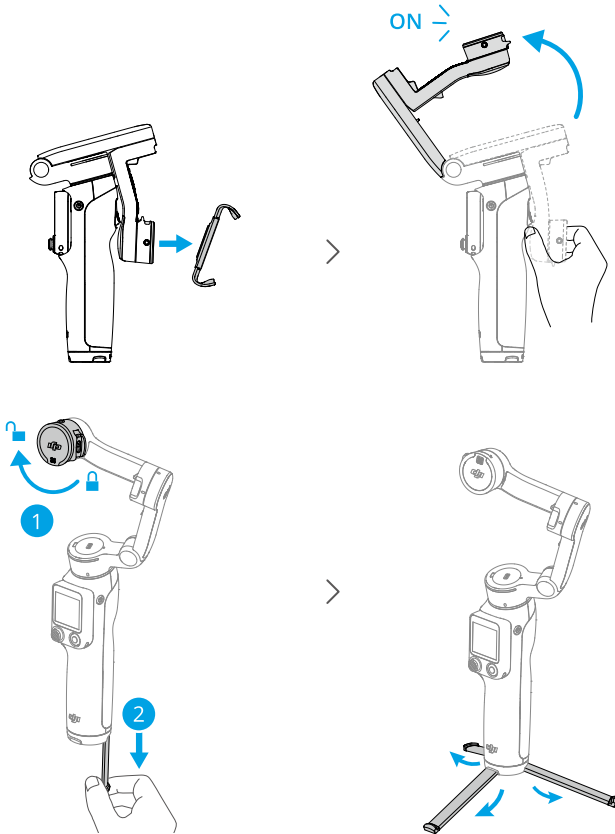


- 1. NFC Pairing Status Indicator
- 2. Tracking Status Indicator
- 3. Pan Motor
- 4. Charging Port (USB-C)
- 5. System Status Indicator
- 6. Contacts
- 7. 1/4"-20 UNC Port
- 8. Osmo FrameTap (hereinafter referred to as "remote controller")
- 9. Function Button
- 10. Joystick
- 11. Shutter/Record Button

- 12. DJI OM Magnetic Phone Clamp 5 (hereinafter referred to as "phone clamp")
- 13. Tilt Motor
- 14. Roll Motor
- 15. Output Port (USB-C)
- 16. Counterweight Mounting Hole
- 17. Power Button
- 18. Trigger
- 19. Built-in Tripod
- 20. DJI OM Multifunctional Module 2 (optional, hereinafter referred to as "Multifunctional Module")

2 Using for the First Time

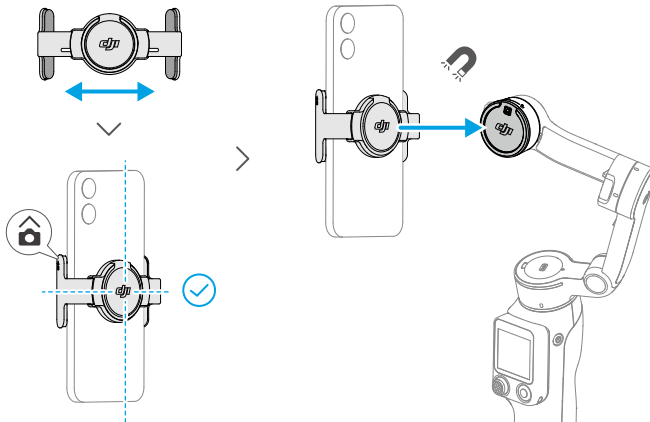
2.1 Unfolding



- The roll axis is locked by default. Rotate it to the unlocked position to ensure proper gimbal operation.
- The remote controller on the handle automatically powers on with the gimbal. Follow the instructions on the remote controller touchscreen to complete the setup.

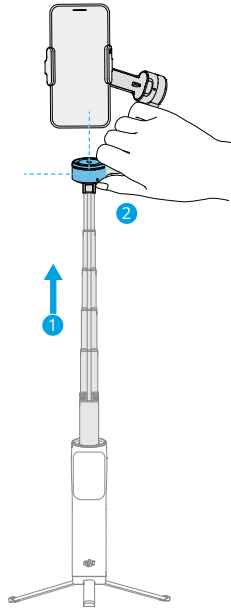
- The built-in tripod is suitable for stable, level surfaces in windless environments. In other conditions, it is recommended to attach DJI OM Grip Tripod (sold separately) to the bottom of the gimbal.

2.2 Attaching the Phone



Once the phone clamp snaps into place, the gimbal automatically stabilizes the phone. If the gimbal stops stabilizing, press the Power Button to enable stabilization.

If you extend the built-in extension rod, make sure to adjust the Pan Motor to be level with the ground. This ensures balance after the phone is attached to the gimbal.

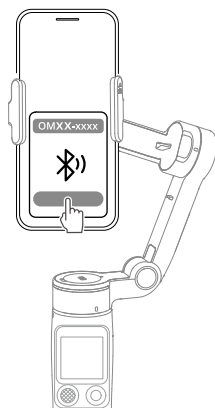



2.3 Connecting to the DJI Mimo App


1. Scan the QR code to download DJI Mimo.



2. Enable Bluetooth on your phone, open DJI Mimo, and connect to the gimbal.



-
-  • To check the Android and iOS operating system versions supported by DJI Mimo, visit <https://www.dji.com/downloads/djiapp/dji-mimo>.
- The interface and functions of DJI Mimo may vary as the software version is updated. Actual user experience is based on the software version used.


-
-  If Bluetooth connection fails, try the following steps:
1. Go to Bluetooth settings on your phone. Remove any existing connections with the gimbal and forget the device.
 2. [Reset Bluetooth for the gimbal](#).
 3. Tap the new device name in Bluetooth settings. Once connected, relaunch DJI Mimo.

2.4 Firmware Update

A prompt will appear in DJI Mimo when new firmware is available. Tap the prompt and follow the on-screen instructions to update the firmware.

The firmware of the gimbal and the remote controller will be updated simultaneously. Make sure the remote controller is attached to the handle. DO NOT exit DJI Mimo or switch to background operation during the update.

If the update fails, restart DJI Mimo, reestablish the Bluetooth connection, and retry.

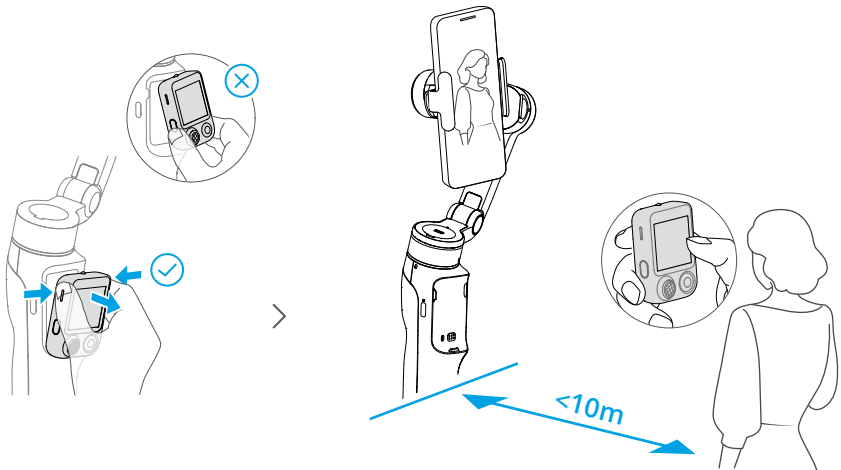
-
-  • Make sure the gimbal has sufficient power and the mobile phone is connected to the internet when updating.

- During the update, it is normal for the gimbal to stop stabilizing or restart, or for the remote controller to restart.

2.5 Usage

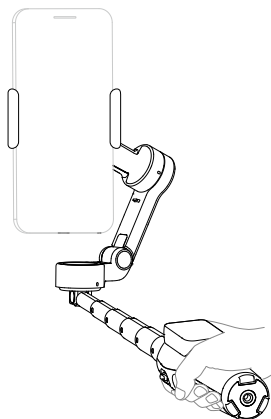
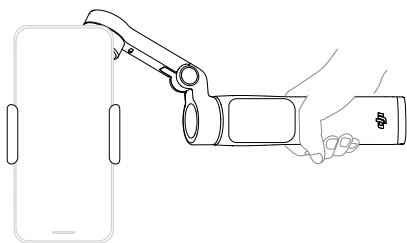
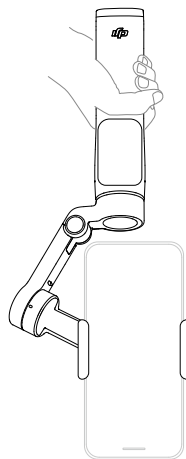
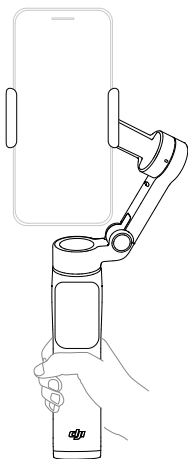
Remote Capture

With the remote controller detached from the handle, you can capture footage remotely and monitor the camera view on the remote controller touchscreen. For details, see [Swipe Left - Phone Screen Mirroring](#) and [Swipe Right - Multifunctional Module](#).



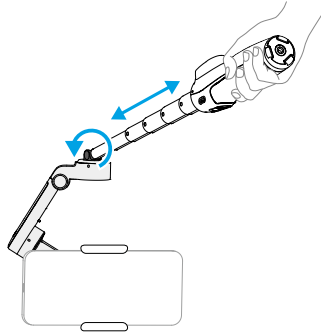
Handheld Capture

With the remote controller attached to the handle, you can grip the gimbal to capture footage.

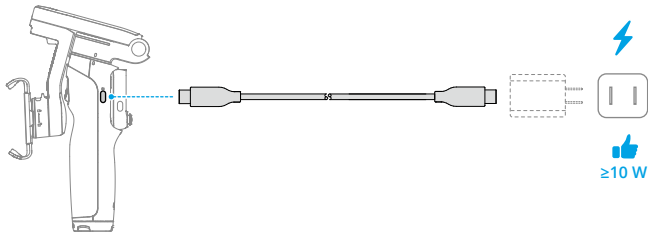


-
- Grip gestures apply to both landscape and portrait orientations.
 - If the built-in tripod is extended, grip the handle to ensure stability. **DO NOT** grip only the tripod.

- The built-in extension rod of Osmo Mobile 8P can be used for low-angle shooting. Click to watch the [tutorial videos](#).



2.6 Charging

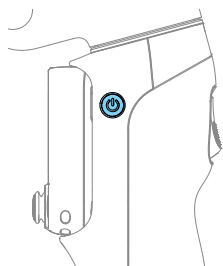


3 Basic Features

3.1 Buttons and Ports

The following feature descriptions use **DJI Mimo as an example**. Support for certain features in the system camera may vary depending on the phone model. For more information, visit <https://www.dji.com/osmo-mobile-8p>.

Gimbal



Power Button

When powered off

With the gimbal unfolded, press once: Power on

With the gimbal folded, press once: Check the battery level

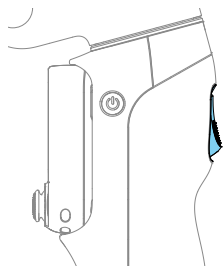
When powered on

Press once: Switch between gimbal modes

Press three times: Enter sleep mode

* Press the Power Button, Shutter/Record Button, or Trigger, or swipe up on the remote controller touchscreen to exit sleep mode.

Press and hold: Power off



Trigger

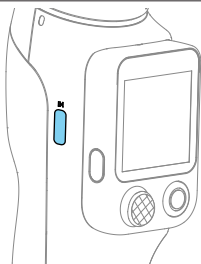
Press once: Start or stop ActiveTrack (applicable to the tracking feature of the Multifunctional Module, DJI Mimo, and the native phone camera)

Press twice: Recenter the gimbal

Press three times: Rotate the phone 180 degrees in the horizontal plane

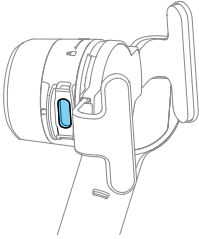
Press once, and then press and hold: Adjust the follow speed to fast mode. Release to exit.

Press and hold: Enter lock mode. Release to exit.



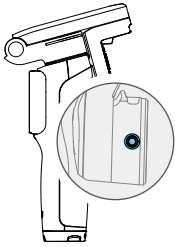
Charging Port (USB-C)

Charging the gimbal



Output Port (USB-C)

For attaching the Multifunctional Module (optional) or DJI OM Fill Light (sold separately), or connecting the included charging cable (15cm) for [Phone Charging](#).

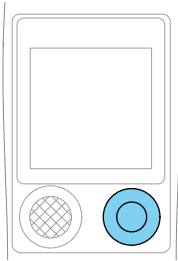


Counterweight Mounting Hole

For mounting counterweights when the phone has a heavy lens module or lens filters attached.

- * Contact official technical support to purchase the counterweights.

Remote Controller



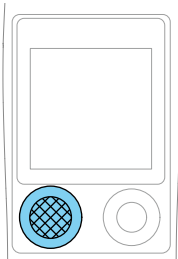
Shutter/Record Button

Press once in the camera view: Take a photo or start/stop recording

Press once in other views: Return to the camera view

Press twice: Take a photo during recording

Press and hold: Burst shooting when in photo mode



Joystick

Gimbal Control

By default, the joystick controls the gimbal movement in all directions.

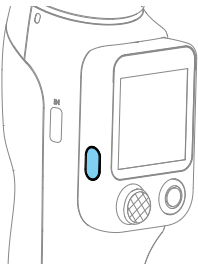
Push the joystick twice to the left or right, and [the gimbal will automatically rotate](#).

When the remote controller is detached, the joystick functions as the gimbal trigger, supporting single, double, and triple presses.

Zoom Control

Quickly push up or down to switch to the next zoom level.

Push and hold to zoom continuously.



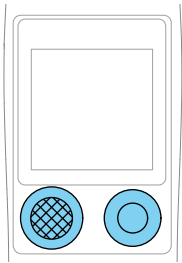
Function Button

Press once: Check the current joystick control mode. Press again to switch the mode

Press twice: Switch the joystick control mode

Press and hold when the remote controller is detached:

Power on/off the remote controller independently

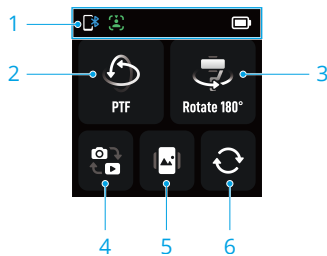


Joystick + Shutter/Record Button

Press simultaneously for more than 2 seconds: Reset the gimbal Bluetooth to re-pair with a phone

3.2 Remote Controller Touchscreen

Home



1. Status Bar

: Shows the connection status between the gimbal and the phone.


: Shows the tracking status. Solid indicates that the tracking feature is available, while blinking indicates that a subject is being tracked. Applicable to the tracking feature of the Multifunctional Module, DJI Mimo, and the native phone camera.

: Tap to view battery levels for both the gimbal and the remote controller.

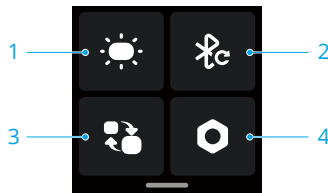
2. Follow Modes

Tap to enter the mode switch screen. Swipe to select the desired mode, and then tap the selected mode to confirm.

3. Rotate the phone 180 degrees in the horizontal plane
4. Switch between photo and video modes
5. Switch between landscape and portrait orientations
6. Switch between the front and rear cameras

 Support for certain features in the system camera may vary depending on the phone model. For more information, visit <https://www.dji.com/osmo-mobile-8p>.

Swipe Down - Control Center



1. Fill Light


After attaching the Multifunctional Module (optional) or DJI OM Fill Light (sold separately), tap this icon to use the **Fill Light** feature.

2. Reset Gimbal Bluetooth


After resetting, the gimbal can re-pair with a phone.

3. Switch Remote Controller Connection

To connect to another device, detach the remote controller from the gimbal, tap this icon, and then select the new device name to complete the connection.

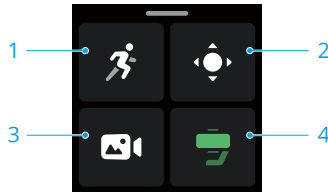
 When connecting to a new gimbal, attach the remote controller to the handle to connect automatically.

4. Settings

- **Display:** Adjust the auto-lock time and screen brightness. Tap  to rotate the screen display.
- **ActiveTrack Indicator:** Enabled by default. For detailed descriptions, refer to the **Indicators** section.

- Other settings: Includes options such as parameter reset, language, device information, and firmware version.

Swipe Up - Gimbal Settings



1. Gimbal Following Sensitivity

Adjust how quickly the gimbal follows hand movements.

2. Joystick Settings

Adjust the speed and direction of gimbal rotation when controlled by the joystick.

3. Creative Capture

Refer to the [Automatic Camera Movements](#) section for details.

4. Gimbal Status

The icon color indicates the current balance status of the gimbal.

- Green: Excellent
- Orange: Poor
- Red: Extremely poor

If the gimbal balance is poor, tap this icon, select manual balancing, and follow the on-screen instructions.

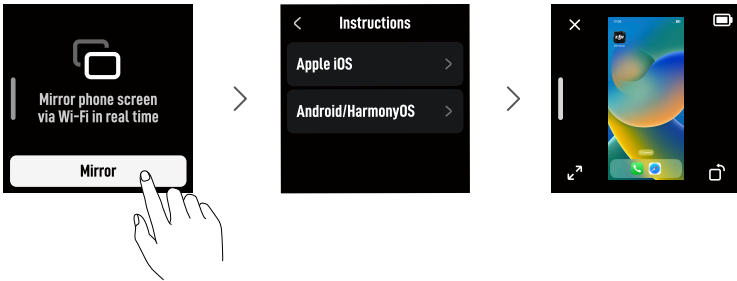
Swipe Right - Multifunctional Module

After attaching the Multifunctional Module, you can see the tracking preview, quickly enable or disable tracking, and customize relevant settings on this screen. Refer to the [Control via Touchscreen](#) section for details.


Swipe Left - Phone Screen Mirroring


During remote capture, you can mirror the phone screen to the remote controller, ensuring that the preview composition matches the actual capture.

Tap **Mirror**, select the operating system, and follow the on-screen instructions to complete the connection.




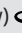


During phone screen mirroring:

- Tap anywhere to hide all buttons. Tap again to show them.
- Swipe right to return to the home screen. Screen mirroring runs in the background, indicated by  in the top status bar. The gimbal can be adjusted as needed during this time.
- Tap **X** to end screen mirroring. Additionally, iOS users need to stop screen recording on the phone.

 Refer to the [compatibility list](#) for more information on supported devices.

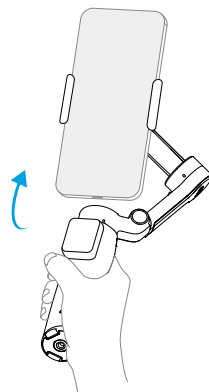
3.3 Follow Modes

Click to watch the [tutorial videos](#).

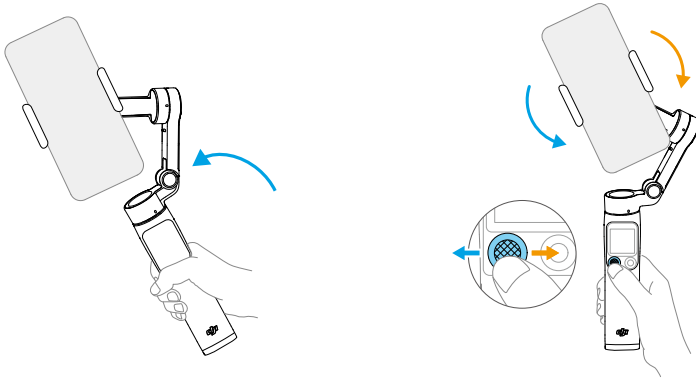
Follow mode	Effect
PTF (Pan and tilt follow) 	①+②
PF (Pan follow) 	①
FPV (Pan, tilt, and roll follow) 	①+②+③
SpinShot 	①+②+③+④
Lock	The phone does not follow handle movements



① Rotate the handle in the horizontal plane and the phone follows



② Swing the handle back and forth and the phone follows



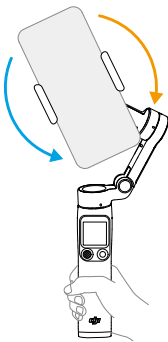
③ Rotate the handle in the vertical plane and the phone follows

④ Move the joystick left or right to rotate the phone in the vertical plane

3.4 Automatic Camera Movements

Examples of automatic camera movements:

① Automatic roll



Rotation stops when the gimbal limit is reached


② Automatic pan



Automatic pan for 360°

Automatic camera movements can be triggered in the following ways. Choose the method based on the desired effect.

Using Creative Capture

Swipe up from the home screen on the remote controller, tap , and select the desired Creative Capture mode. Set the parameters such as duration and direction, and then tap **Start**. The gimbal will automatically move along the preset trajectory and complete the capture.

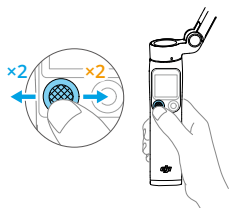
Creative capture mode	Effect
SpinShot	①
Surround Shot	②
A/B Path	Moves between point A and point B





* When using A/B Path, set the current gimbal position as point A, then use the joystick to adjust the gimbal to a different position and set it as point B.

Using the Joystick

Push the joystick left or right twice. The gimbal will automatically pan or roll depending on the current follow mode.

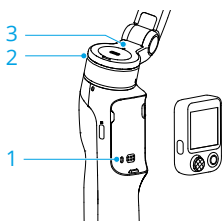
Press the trigger or joystick twice to stop the rotation and recenter the gimbal.










Follow mode	Effect
SpinShot 	①
PTF 	②
PF 	②
FPV 	②

 Make sure the joystick is set to control the gimbal.

3.5 Indicators






1. System Status Indicator

Connection Status		
	Pulses blue	Disconnected from the remote controller
	Solid blue	Connected to the remote controller
Gimbal Battery Level		
* With the gimbal folded, press the Power Button once to check the gimbal battery level using the indicator.		
	Solid green	51%~100%
	Solid yellow	26%~50%
	Solid red	1%~25%
Other Status		
	Pulses green	Charging
	Blinks red quickly	Gimbal error (low battery or high temperature)




2. Tracking Status Indicator

Applicable to the tracking feature of the Multifunctional Module, DJI Mimo, and the native phone camera.

	Solid green	Ready for tracking
	Pulses green	Subject being tracked
	Off	Tracking is unavailable

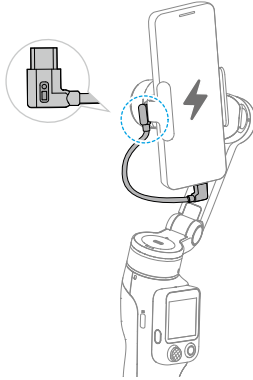
3. NFC Pairing Status Indicator

Applicable to [Apple DockKit Tracking](#). This indicator is disabled by default. To enable it, go to the More Settings page in DJI Mimo.

	Pulses white	NFC not paired
	Blinks white quickly	NFC pairing
	Solid white	NFC successfully paired

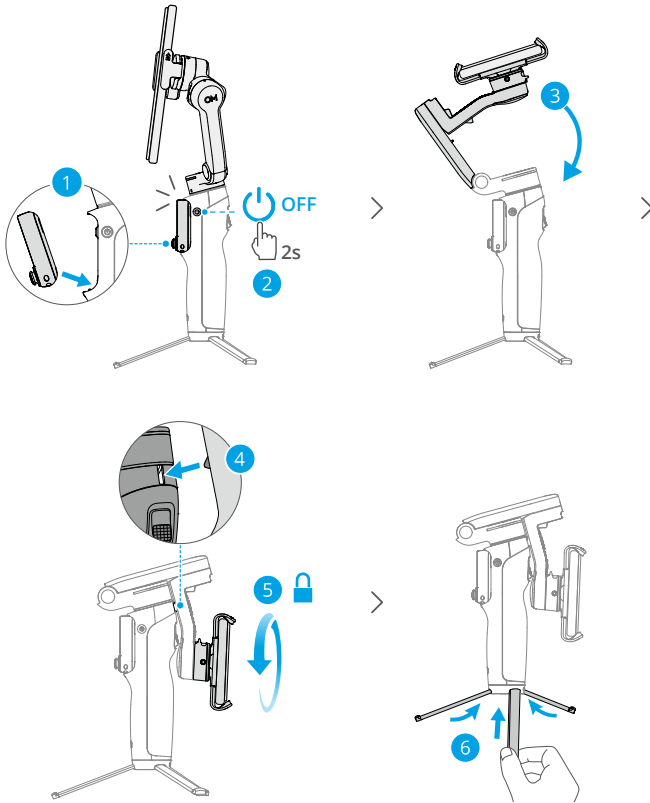
3.6 Phone Charging

💡 Make sure that the gimbal is sufficiently charged.



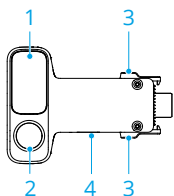
3.7 Storage

- Make sure to retract the built-in extension rod beforehand.
- When the gimbal powers off, it automatically rotates to the folding position.
- The remote controller on the handle automatically powers off with the gimbal.



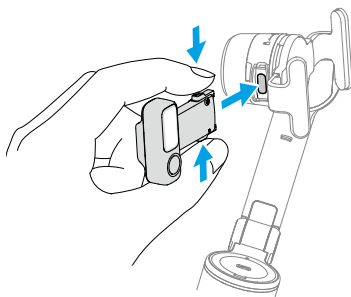
4 Advanced Features

4.1 Multifunctional Module (Optional)

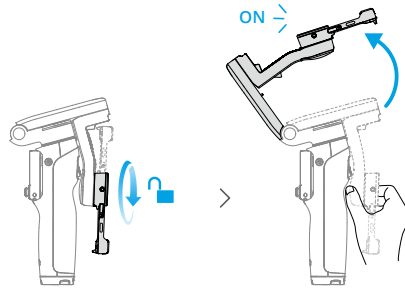


1. Fill Light
2. Tracking Camera
3. Release Button
4. Output Port (USB-C)

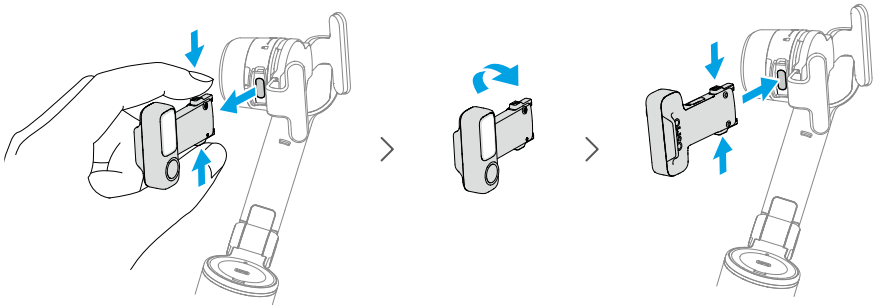
Installing



- Once the Multifunctional Module is installed, the Tracking Status Indicator on the gimbal turns solid green (enabled by default).
- If the Multifunctional Module is idle for more than five minutes, it automatically enters sleep mode and the indicator turns off. To exit sleep mode, press the trigger on the gimbal.
- If the Multifunctional Module is pre-installed, rotate to unlock the roll axis, then unfold the gimbal to start using.



To switch the camera direction, remove the Multifunctional Module, flip it, and reinstall.



Tracking and Shooting

The Multifunctional Module allows you to enable tracking in the native camera and third-party camera apps, without the need to use DJI Mimo.

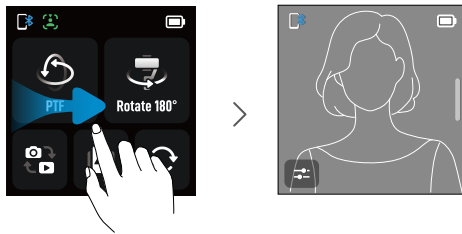
The Multifunctional Module supports tracking people, vehicles, pets (cats and dogs), and other objects. Different subject types offer different options for controlling tracking and capture.

Subject	Enable/Disable tracking	Adjust composition
People	Touchscreen	Button
	Button	Gesture
	Gesture	
Pets (cats, dogs), Vehicles	Touchscreen	Button
	Button	

Subject	Enable/Disable tracking	Adjust composition
Other Objects	Touchscreen (manual selection only)	Button

- ⚠️ • The tracking and shooting features of the Multifunctional Module are disabled in DJI Mimo.
 - Position the tracking camera of the Multifunctional Module and the phone camera towards the subject.
-
- 💡 • It is not recommended to use in backlight or low-light scenarios.
 - For human tracking, keep the subject 0.5 to 8 meters away from the tracking camera.
 - For non-human subjects, keep the subject occupying at least 10% of the tracking preview.

Control via Touchscreen



Swipe right from the home screen on the remote controller to enter the tracking preview.

- Auto Selection: Available subjects are automatically framed on the touchscreen. Tap a tracking box to start tracking. To switch subjects, tap the corresponding tracking box.
- Manual Selection: Drag a box around any subject on the touchscreen. A green tracking box indicates that tracking has started.

Control via Buttons

Press the trigger once to enable or disable tracking.

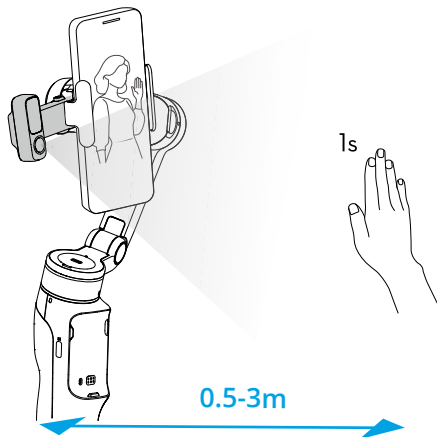
If **Composition** is set to **Original** in **ActiveTrack Settings**, you can use the joystick to adjust the composition during tracking. To restore the default composition, press the trigger twice.



Control via Gesture

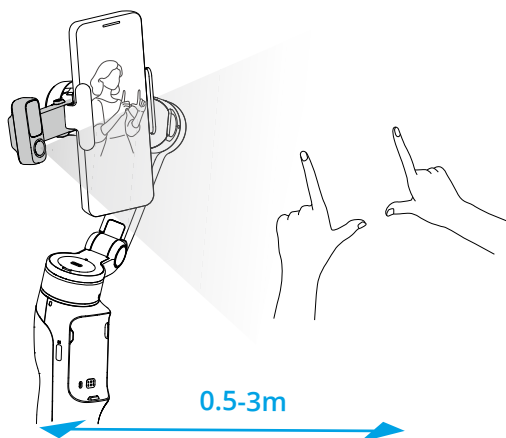
- A selfie is captured using the front phone camera in the following illustrations.
- To achieve optimal gesture detection, keep the subject 0.5m to 3m away from the tracking camera.
- The Tracking Status Indicator of the gimbal is hereinafter referred to as the "indicator".
- The gesture control feature can be customized in [ActiveTrack Settings](#).


Tracking


1. Enable tracking: Make the  gesture toward the camera. The indicator pulses green.



2. Adjust the composition: After enabling tracking, adjust the composition as needed. Make the   gesture toward the camera. The indicator turns solid green. The subject can move to the desired position in the frame.



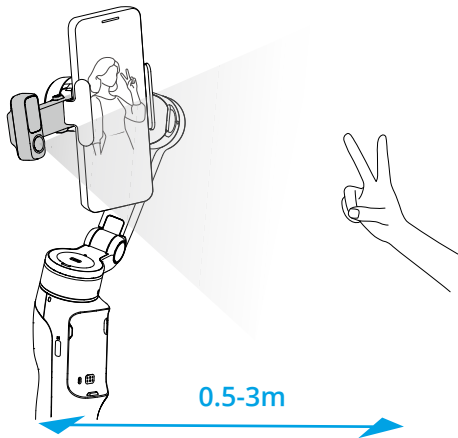
Make the  gesture again to confirm the composition. The indicator resumes pulsing green and tracking continues with the new composition. To restore the default composition, press the trigger twice.

3. Stop tracking: Make the  gesture again. The indicator turns solid green.


Shooting

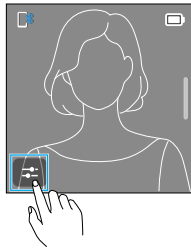
-  Make sure the phone is paired with the gimbal via Bluetooth.
-

Whether tracking is enabled or not, you can use the ✌️ gesture to take a photo or start/stop recording.



ActiveTrack Settings

To enter the ActiveTrack Settings screen, tap  in the tracking preview.



Composition

Original: Maintains the original composition upon enabling tracking, but allows manual adjustment during tracking.

Centered: Automatically centers the subject in the tracking preview upon enabling tracking, and keeps this composition during tracking.

Speed

Slow speed provides smooth tracking, ideal for live streaming.

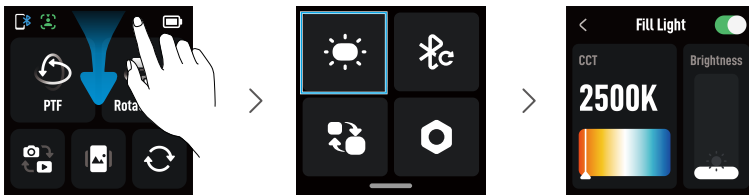
Medium speed is ideal for parallel or orbit tracking.

Fast speed is ideal for close-up circling or high-motion scenes.

Image Calibration

If the composition in the tracking preview does not match the phone screen, tap **Image Calibration**, push the joystick to adjust, and then save.

Fill Light



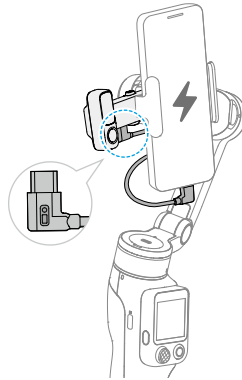
Enter the fill light screen and tap the upper-right corner to turn on the fill light. You can then adjust the following settings:

- To adjust the color temperature, swipe left or right on the touchscreen or push the joystick left or right.
- To adjust the brightness, swipe up or down on the touchscreen or push the joystick up or down.

Phone Charging

-  Make sure that the gimbal is sufficiently charged.

- The gimbal must be powered on.



4.2 Connecting to Wireless Microphones

After installing a receiver on the phone, you can connect up to 2 transmitters simultaneously. For details, see [DJI Mic Series Mobile Receiver User Manual](#).

4.3 Apple DockKit Tracking



- Click to watch the [tutorial videos](#).
- This feature cannot be used simultaneously with the tracking feature of the Multifunctional Module or DJI Mimo.

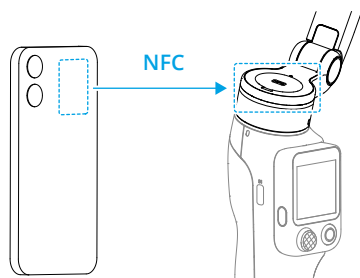
iPhone users can connect to the gimbal via NFC and use the tracking feature powered by Apple DockKit, without the need for the Multifunctional Module. This feature supports the native camera app and third-party apps.



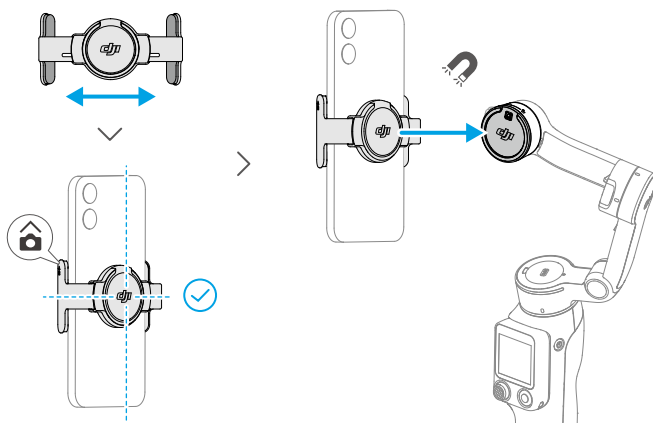
- Device requirements:
 - ♦ Model: iPhone 12 series or later, excluding iPhone SE (3rd generation) and iPhone 16e.
 - ♦ System: iOS 18.5 or later.
- Refer to the [compatibility list](#) for more information on third-party apps that support Apple DockKit.

DockKit Pairing

1. Unlock the phone and stay on the home screen. Make sure the network connection is stable. Enable Bluetooth and NFC.
2. Unfold the gimbal. Touch the phone's NFC area to the gimbal's NFC area. Wait for the pop-up window and follow the instructions.



3. Remove the Multifunctional Module and then attach the phone to the gimbal.



4. The gimbal will nod when pairing is successful.

-
- Please wait patiently for the connection to complete.
 - To pair with another phone, [reset Bluetooth for the gimbal](#) before pairing.
-

Tracking and Shooting

Open the native camera app, and tracking will automatically start when the subject enters the frame. Press the trigger once to enable or disable DockKit tracking.

If your phone is paired with an Apple Watch, use the Camera Remote app to control tracking and shooting remotely.

* watchOS 11 or later is required.

4.4 Remote Control With Watch

You can use DJI Mimo on an Apple Watch to view the camera feed, control the gimbal, and enable ActiveTrack remotely.

1. Pair the watch with your phone and install DJI Mimo on both devices.
2. Run DJI Mimo on the phone, connect to the gimbal, and enter the camera view.
3. Run DJI Mimo on the watch to start remote control.



- Keep the devices within the Bluetooth range.
 - To view the supported watch devices, visit <https://www.dji.com/osmo-mobile-8p/faq>.
-

5 Maintenance

- ⚠ • Put out a battery fire using water, sand, a fire blanket, or a dry powder or carbon dioxide fire extinguisher according to the actual situation.
 - Never disassemble or pierce the product in any way or the battery may leak, catch fire, or explode.
-
- 💡 • It is recommended to use a soft, dry cloth to clean the product.
 - When the phone is attached to the gimbal, the compass feature of the phone may experience interference. In such cases, calibrate the compass according to the prompts in the phone.
 - The NFC and wireless charging functions of the phone may be affected when the phone clamp is attached. These functions will no longer be affected once the phone clamp has been removed from the phone.
 - The built-in extension rod contains a spring. If the extension rod is extended for more than a week, the spring may become deformed and the extension rod can no longer be used normally. It is recommended to retract the extension rod and fold the gimbal after use.
-

6 Appendix

6.1 Specifications

Visit <https://www.dji.com/osmo-mobile-8p/specs> for more information.

6.2 Phone Compatibility

Visit <https://www.dji.com/osmo-mobile-8p> for more information.



Contact

DJI SUPPORT

This content is subject to change without notice.

Download the latest version from



<https://www.dji.com/downloads/products/osmo-mobile-8p#doc>

If you have any questions about this document, please contact DJI by sending a message to DocSupport@dji.com.

DJI and OSMO are trademarks of DJI.

Copyright © 2026 DJI All Rights Reserved.